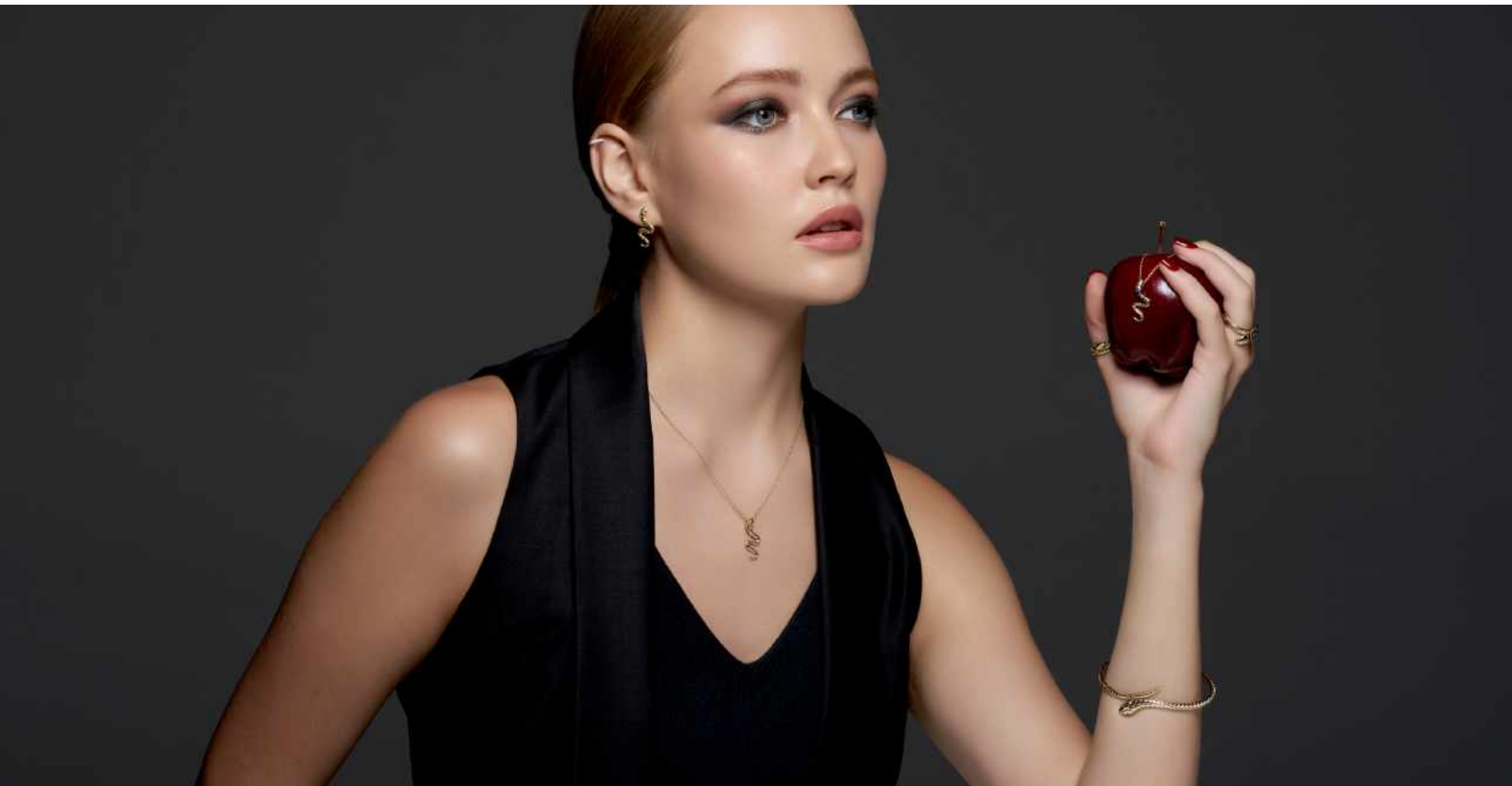


# LOUISE SINCLAIR



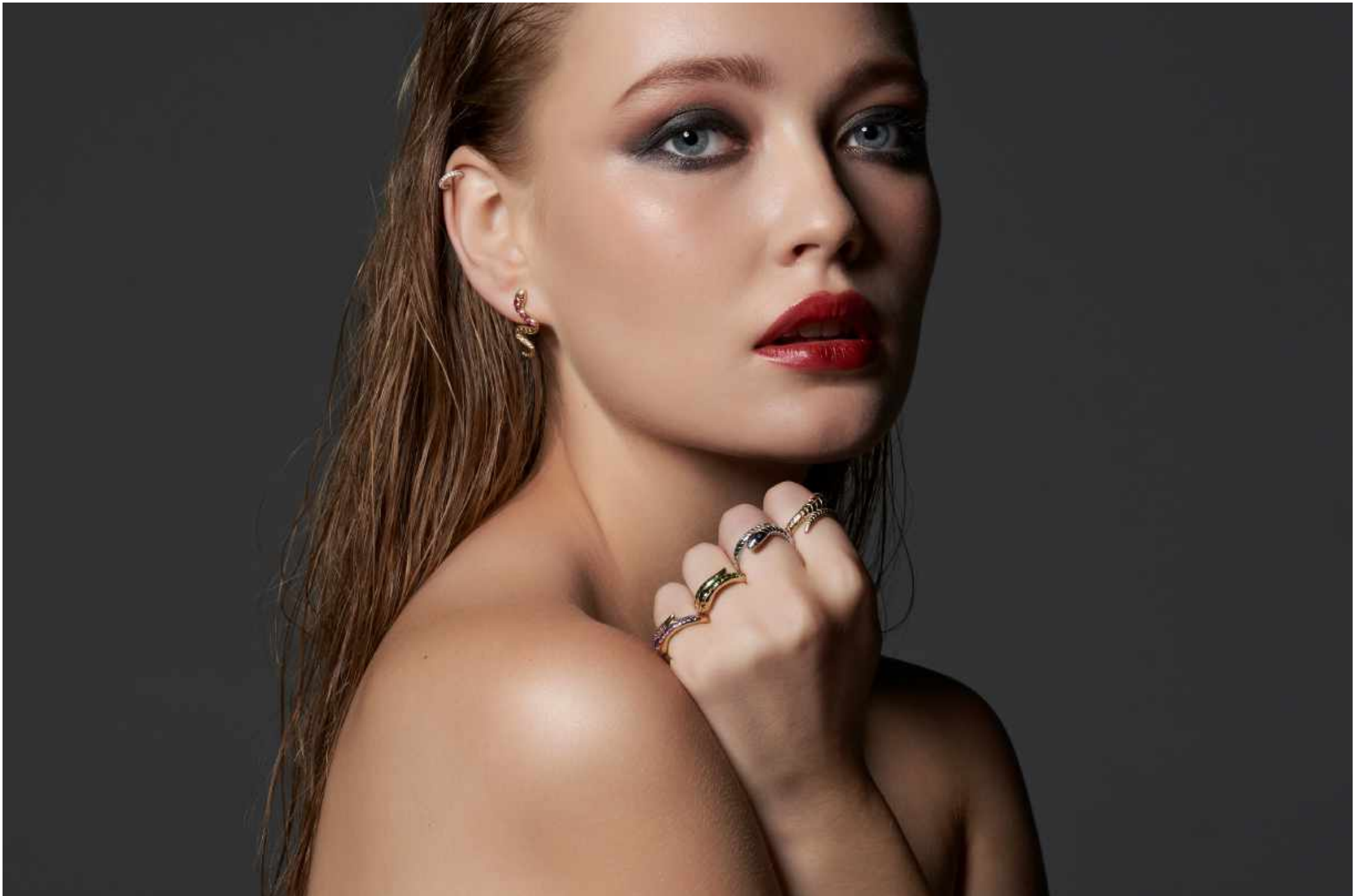
'Garden of Eden' Collection



## **‘Garden of Eden’ collection**

Inspired by Louise’s passion for ancient civilisations, the serpent is filled with symbolic meaning and mysticism. The alluring silhouette of the snake complemented by vibrant, exotic stones gives the ‘Garden of Eden’ collection its enchanting charisma. A comprehensive range comprising necklaces, rings and earrings, the pieces can be conveniently combined to create a daring, bold look.

Versatile and timeless, ‘Garden of Eden’ can be worn effortlessly by women across generations, and is ideal for those who want to express their confident and fun personality through comfortable yet edgy jewellery.



LOUISE SINCLAIR

'Garden of Eden' Collection • W: [louisesinclair.com](http://louisesinclair.com) • FB/IG: @louisesinclairjewellery



---

9ct Yellow Gold Snake Ring Set  
with Amethysts  
£400.00



---

9ct Yellow Gold Snake Ring Set  
with Sapphires  
£420.00



---

9ct Yellow Gold Snake Ring Set  
with Tsavorites  
£470.00



---

9ct Yellow Gold Snake Ring Set with  
Diamonds and Tsavorites  
£1,200.00



---

9ct White Gold Snake Ring Set with  
Diamonds and Tsavorites  
£1,200.00



---

9ct Yellow Gold "Snake" Ring Set with  
Sapphire Eyes  
£460.00



---

9ct White Gold "Snake" Ring Set with  
Sapphire Eyes  
£460.00



---

9ct Yellow Gold Plain Snake Earrings  
£260.00



---

9ct Yellow Gold Snake Earrings Set  
with Sapphires  
£360.00



---

9ct yellow gold Snake Earrings set with  
Red Spinels  
£540.00



---

9ct Yellow Gold Snake Earrings Set  
with Tsavorites  
£410.00





---

9ct Yellow Gold Yellow Gold "Snake"  
Bangle Set with Sapphire Eyes  
£1,430.00



LOUISE SINCLAIR

'Garden of Eden' Collection • W: [louisesinclair.com](http://louisesinclair.com) • FB/IG: @louisesinclairjewellery



---

9ct Yellow Gold Snake Pendant Set with  
Sapphires on 18" Chain  
£245.00



---

9ct Yellow Gold Plain Snake Pendant  
on 18" Chain  
£200.00





**A piece of jewellery should be an extension of your body. It should move with you, not weigh you down. It should simply magnify your beauty.**

To me the practicality of a piece of jewellery is vital. It needs to be comfortable and easy to wear. Only when it is worn does it become valuable. I find it such a shame when a treasured piece is locked away in a safe somewhere because it is either too awkward or outdated to wear.

This is why my intention is always to design pieces that strike a fine balance between creative flair and practicality. They need to be flexible enough to be worn to any occasion, with any outfit. Coco Chanel said: 'Simplicity is the keynote of elegance', and my approach to jewellery design could not be more aligned to that line of thinking.

xx LS

# Contact

## **Louise Sinclair**

Founder & Director

[louise@louisesinclair.com](mailto:louise@louisesinclair.com)  
+44 777462649  
[louisesinclair.com](http://louisesinclair.com)  
FB/IG @louisesinclairjewellery

## **Sophie Walker**

Press Relation Manager

[shuewilliams@hotmail.com](mailto:shuewilliams@hotmail.com)